



SAFE-TEC

COMMERCIAL
RECOVERY SOLUTIONS



Content

6-7

Safe-Bar MKIII-E Introduction

Recovery & Towing of Heavy Vehicles

8-9

Safe-Bar MKIII-E Base Kits

Recovery & Towing kit - The heart of the Safe-Bar

10-11

Safe-Bar MKIII A-Frame Multitool

Optimized Recovery & Towing Solution for professionals

12-13

Safe-Bar Fittings & Accessories

Fittings, Toolbox Mounts and Accessories for the Safe-Bar

14-15

Safe-Brake

For optimal braking performance - Everytime

16-17

Wheelduck 3.0

Heavy duty Recovery rigging in a lightweight design

18-19

The Wheelduck Crown

Highly reliable lifting and recovery crowns for professionals

20-21

Safe-Tec Snatch Blocks

Lightweight Blocks - Exclusively designed for terrain recovery

22-23

Extras

Dollies & Tow lighting solutions for safe transport





30 YEARS OF RECOVERY

Safe-Tec has years of experience in supplying innovative, trail-blazing recovery, towing and lifting solutions based on patents developed in-house to the defence, recovery and wind power industries. Working closely with customers and drawing on a robust network of specialist skills providers, we have the capacity to deliver both standard and bespoke solutions. Safe-Tec is fully certified to ISO 9001 quality management system as well as ISO 14001 environmental management system. Safe-Tec produces solutions that meet the highest demands on safety, occupational health & safety and quality, based on precisely defined design requirements. Against this background, the company has been supplying complete solutions comprising design, development, distribution and service agreements to a variety of industries since the 1990s, working through established agencies including strategic partnerships with organisations such as Autoconsult, Force Technology and Rescue Center Denmark. Safe-Tec is based centrally in Denmark, delivering solutions to customers world wide. The company is rightly recognised for its development and manufacture of

high-quality products, and can therefore boast of being a regular supplier of solutions and services to the armed forces of Australia, Canada, Denmark and Norway – to name but a few.

Key distinguishing features of the Safe-Tec organisation comprise: The company's world-famous development and production of equipment for recovery and towing heavy vehicles, with solutions including Safe-Bar, A-Frame, Safe-Brake, Wheelduck and Safe-Light. Its firmly consolidated service department which handles service and guidance for customers, certification and re-certification, statutory service procedures and training courses for key personnel at our own premises, at vocational colleges or at the customer's facilities. As Safe-Tec customers are heavily dependent on fast, reliable service, Safe-Tec maintains a broad selection of items, with solid stocks of standard goods, critical components and spare parts. This is backed by a firmly established international network of partners and suppliers that ensures rapid supply, serving as a guarantee for our customers' capacity to continue operations. **On account of its years of experience working with mission-critical industries, Safe-Tec is able to optimise operation on an ongoing basis so as to ensure the processing and implementation of customers' requirements.** As an example of this, Safe-Tec has introduced fully supported IT systems with features including component traceability as known from the aeronautical industry.



Introducing the Safe-Bar Towing and Recovery System: by Safe-Tec, a revolutionary solution that has set the standard for vehicle recovery since its inception in 2014. As a cornerstone of the Safe-Tec product range, the Safe-Bar offers unparalleled benefits:

Chassis Protection and Enhanced Pulling Force: Safeguard your customers' commercial vehicle chassis while increasing pulling force for successful recoveries of damaged vehicles.

Secure Attachment: Utilizing a "counter-nut" construction, the Safe-Bar ensures the strongest attachment available on the market, providing peace of mind during recovery operations.

Angled Pulling Capability: Facilitates angled pulling for retrieving commercial vehicles from ditches and tight spaces where maneuverability is limited.

Ergonomic Towing Solution: Quickly transitions to an ergonomic towing solution post-recovery, directly lifting from the front to reduce rear axle load, thereby enhancing stability.

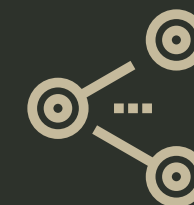
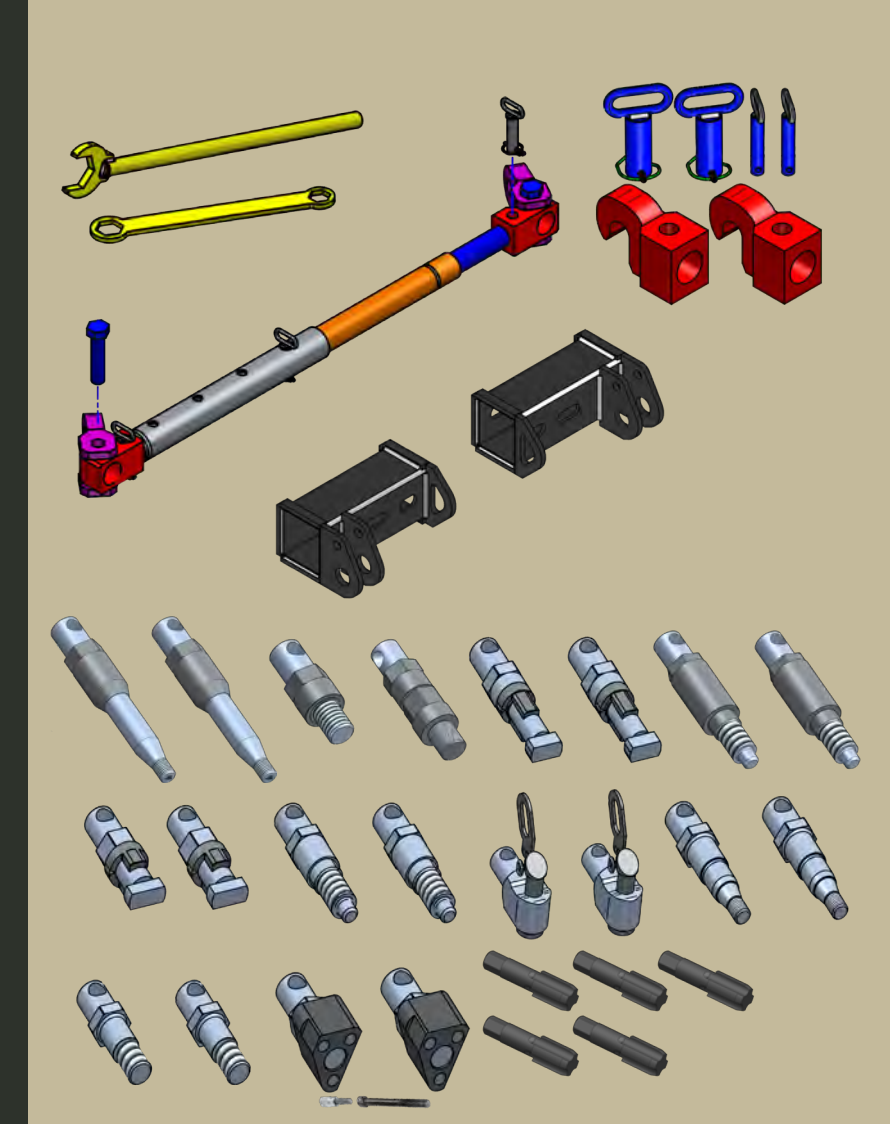
Versatility: The Safe-Bar accommodates both lifted and flat towing operations, ensuring fleet agility in diverse situations.

User-Friendly Design: Developed in collaboration with recovery professionals and educational institutes, ensuring optimal usability and performance in real-world scenarios.

Optimized Strength and Durability: Decreased thread amount enhances strength and durability without compromising reliability.

Stepless Width Adjustments: Allows for precise width adjustments, enabling efficient and customizable usage in various recovery and towing situations.

Trust in the Safe-Bar Towing and Recovery System from Safe-Tec for unmatched precision, reliability, and performance in every operation.



42 kg
Systemweight



Certified
64t Direct pull



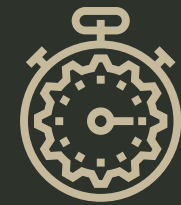
Covers all
Euro commercial trucks



Single Operator



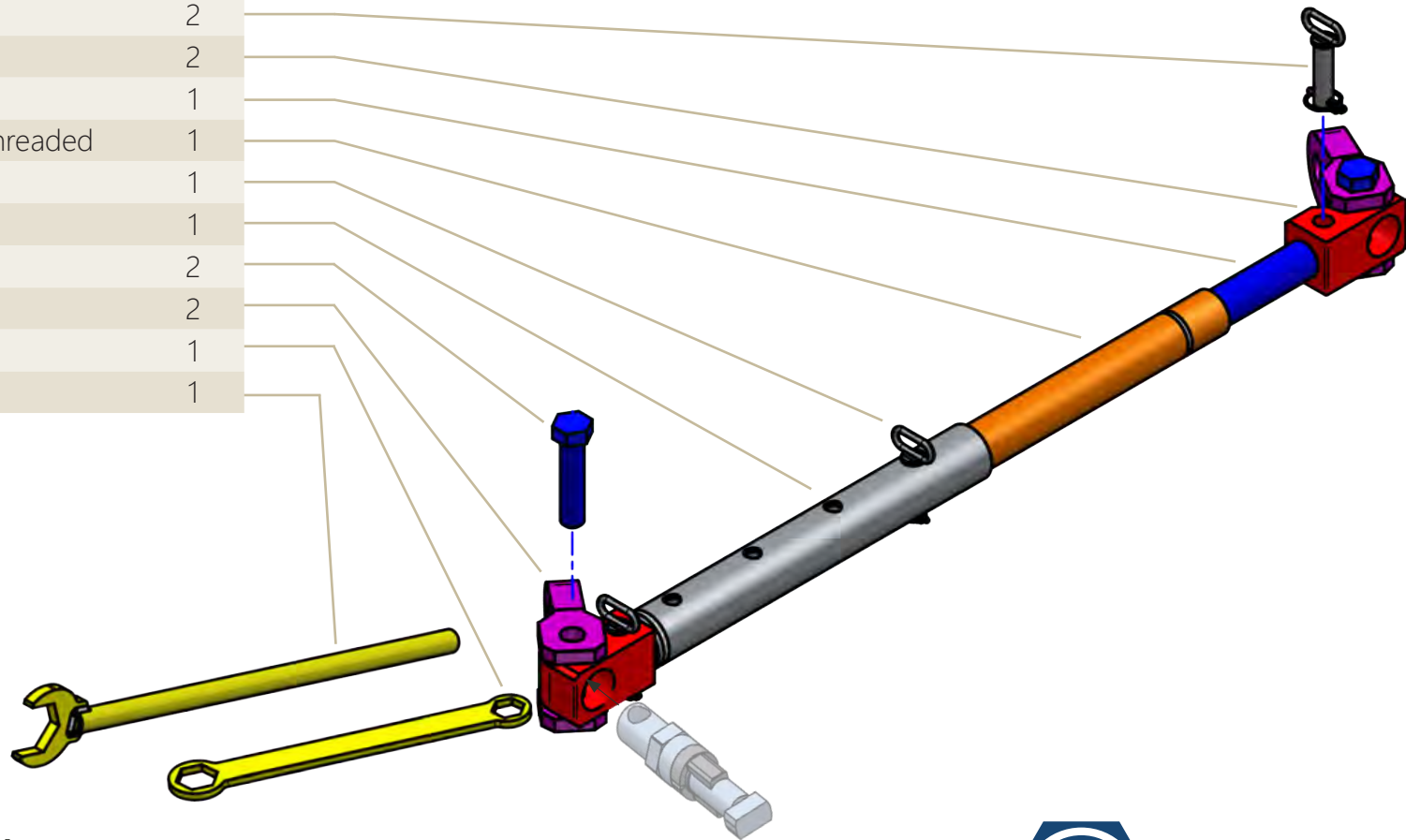
Innovative Width
Adjustment



Sub 5 min
Deployment

SAFE-BAR MKIII-E

Part No.	Item Description	Qty.
PIN242	Pin Bolt Ø24 x 100mm	2
BRA142	Bracket for Fitting taps	2
SAF217R	Threaded Axle	1
SAF214B	Internal Telescopic Tube int. threaded	1
PIN204	Width locking Pin Bolt	1
SAF214A	External Telescopic Tube	1
BOL130	Bolt Ø30 x 130mm 3,5mm	2
BRA152	Lift & Pull Bracket, Ø 41mm	2
WRE122	Wrench 36mm x 46mm	1
WRE110	Wrench 65mm x Ø30mm	1



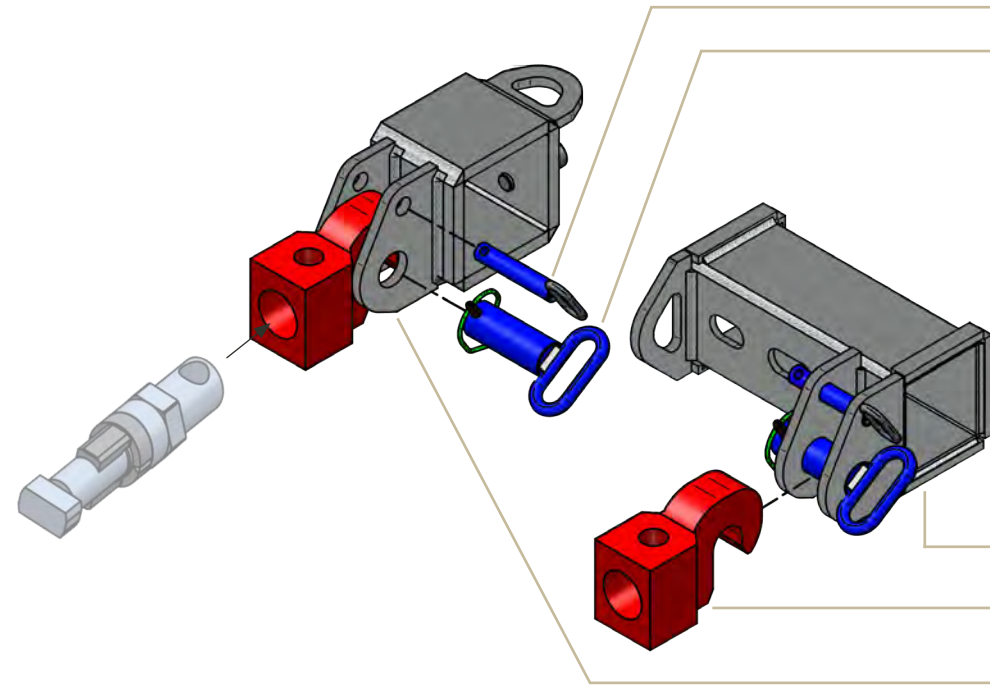
Base Kit SAF214K

The 3rd generation of Safe-Bar has been on the market since 2020. The MKIII-E system has stepless width adjustment - hereby achieving full compatability for all commercial vehicles with 2 connections in the front. The Safe-Bar system is available as basic kits(SAF214K), thereafter you can choose a partial or full set of fitting taps.



RECOVERY

TOWING



Part No.	Item Description	Qty
PIN201	Pin Bolt Ø20X109mm	2
PIN401	Pin Bolt Ø40 X 110mm	2
BRA141	Hook and Tow Bracket	2

Part no.	Platform	Boom Dim.	Qty
BRA097W	EmpL-Isoli-SWS-Eurotechnik	120 x 120mm	2
BRA097J	Jige Mega/Eurotow	110 x 110mm	2
BRA097O6	Omars Old type - WR25XT	142 x 142mm	2
BRA097O7	Omars New Type	160 x 121mm	2
BRA097T	Tevor	140 x 120mm	2
BRA097TC	TCM	152 x 112mm	2
BRA097X	WR25XT	162 x 162mm	2
BRA096O7	OMARS HD Flatbed	160 x 121mm	2

Part no.	Platform	Boom dim.	Qty
BRA097A-1&2	FALKOM	102 x 102mm	1/1
BRA097B-1&2	BRO Starke	102 x 112mm	1/1
BRA097G-1&2	De Groot	110 x 110mm	1/1
BRA097i-1&2	Interstater	112 x 112mm	1/1
BRA097E-1&2	Erkin	120 x 135mm	1/1
BRA097ML-1&2	Miller	4" x 4"	1/1
BRA097M-1&2	Miller	5" x 5"	1/1
BRA097V-1&2	Vulcan V70	152 x 112mm	1/1
BRA097VL-1&2	Vulcan V30	104 x 92mm	1/1
BRA097Z	Zacklift	104 x 104mm	1/1

Tow Kit SAF228K

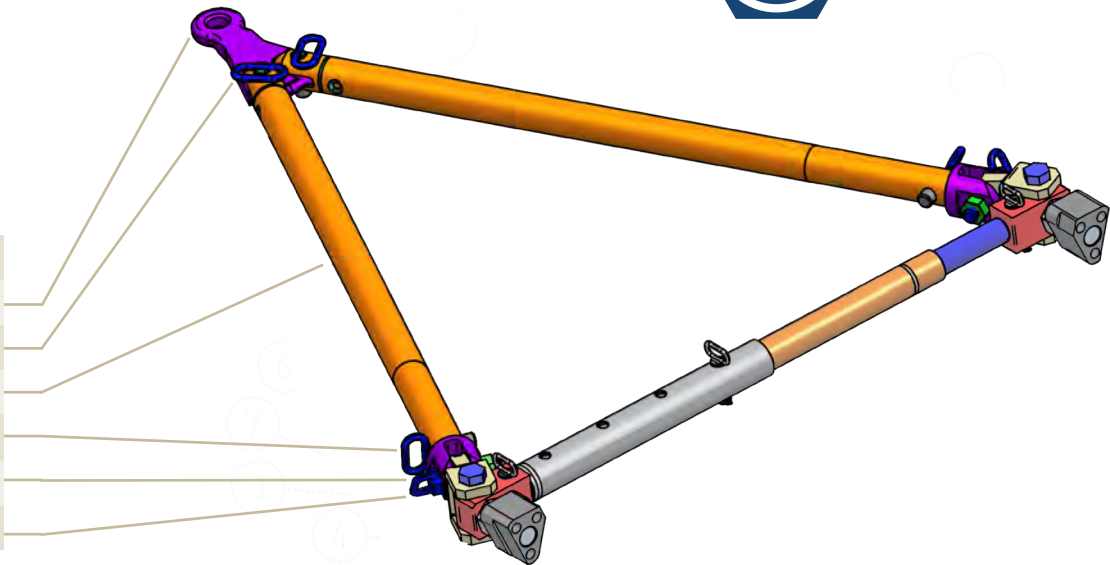
Lift- & Tow module for the Safe-Bar MKIII. A system, simple and easy to use. Width adjusment by sliding the lifting brackets over the Crossbar of the recovery vehicle. The hook designed bracket makes loading and unloading easy and safe. Simply mount the fitting Taps and Tow hook. The towing kits are available as basic kits, adding the brackets that fits you recovery vehicle, and suitable fitting tap kit.

SAFE-BAR MKIII-E A-FRAME MULTITOOL

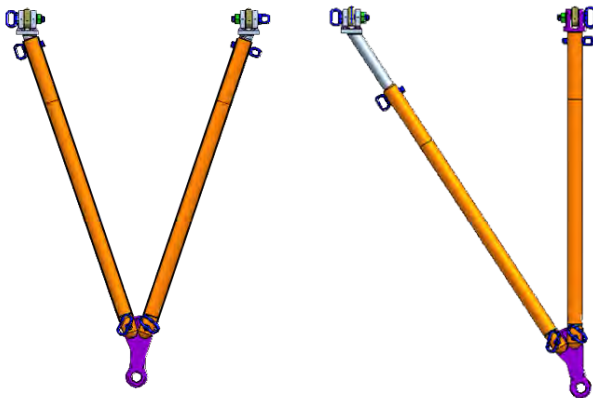
The A-Frame Multi Tool embodies the core values of innovation and ergonomics. Offering a comprehensive range of functionalities in one compact kit, it streamlines operations, reduces weight, and enhances ergonomic performance. Whether integrated with our Safe-Bar kit or utilized individually, it adapts seamlessly to your specific requirements. Addressing the everyday challenges of safely and efficiently towing modern commercial trucks without causing further damage, our multitool system is meticulously designed to meet diverse needs.



Part no.	Item Description	Qty
TOW120X	Towing eye Ø: A=40/50/57mm	1
PIN305	Pin bolt Ø30x90mm flat handle	2
TOW224	MKII Bar complete	2
PIN306	Pin bolt Ø30mm	2
TOW221	Adaptor for A-Frame	2
PIN403D	Pin bolt Ø40x132mm	2



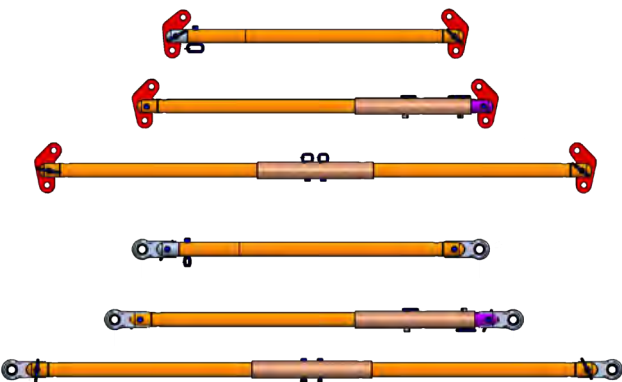
Reverse Upgrade



Part no.	Item Description	Qty
PLA152D	Eye for mounting on Vehicle rear	4
TOW222	19DG Adaptor for Revert Center	2
TOW227	33DG Adaptor for Revert Offset	1

Upgrade for busses and Vehicles with center pin in the front. Due to fixed angulation brackets, the A-Frame can be reversed mounted and is an ideal tool for busses and coaches with low chassis height.

Yoke & Tow Bar Upgrade



Part no.	Item Description	Qty
TOW203	Connector tube	1
TOW210E	Equalizer/Spreaderbar Block	2
TOW125	Towing eye Ø40mm	2
TOW230B	Adaptor Type 1	1
TOW230C	Adaptor Type 2	1
PIN306	Pin bolt Ø30mm	4
PIN308	Pin bolt Ø30x105mm	1

To achieve the full benefit of the multi tool, and to save weight on recovery vehicle, the upgrade for tow bar and spreader bar allows for a fully specced truck with minimum stowage volume and weight.

SAFE-BAR MKIII-E FITTINGS & ACCESSORIES

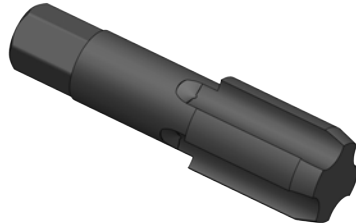
Part no.	Item Description	Qty
BRA1551K	Tap Set Volvo FH-FM -2012	1
BRA1560K	Tap Set Volvo FH/FM 2012 – og Renault T 2014-	1
BRA1580K	Tap Set MAN TGA/ TGS/TGX Iveco, Renault Magnum, MB Actros 2012 -	1
BRA1661K	Tap Set DAF CF & XF - 2013*	1
BRA1670K	Tap Set DAF CF/XF 2014 -*	1
BRA160K	Tap Set Scania 4 serie, "P", "R" & "G" - Incl. Locking pin	1
BRA1601K	Tap Set Scania 2017- complete incl. allen key & bolts	1
BRA1672K	Tap Set DAF XG/XF 2022 -	1
BRA1561K	Tap Set VOLVO FMX 2022-	1
BRA1680K	Tap Set Ford F-Max 2019-	1
BRA184K	Tap Set VDL Citea SLFA E-Bus	1

The Safe-Bar Ekosystem embraces all commercial platform models currently on the European market. **When new chassis formats come to market, our experienced team of Engineers designs the new tap fittings to fit the standard Safe-Bar format.**

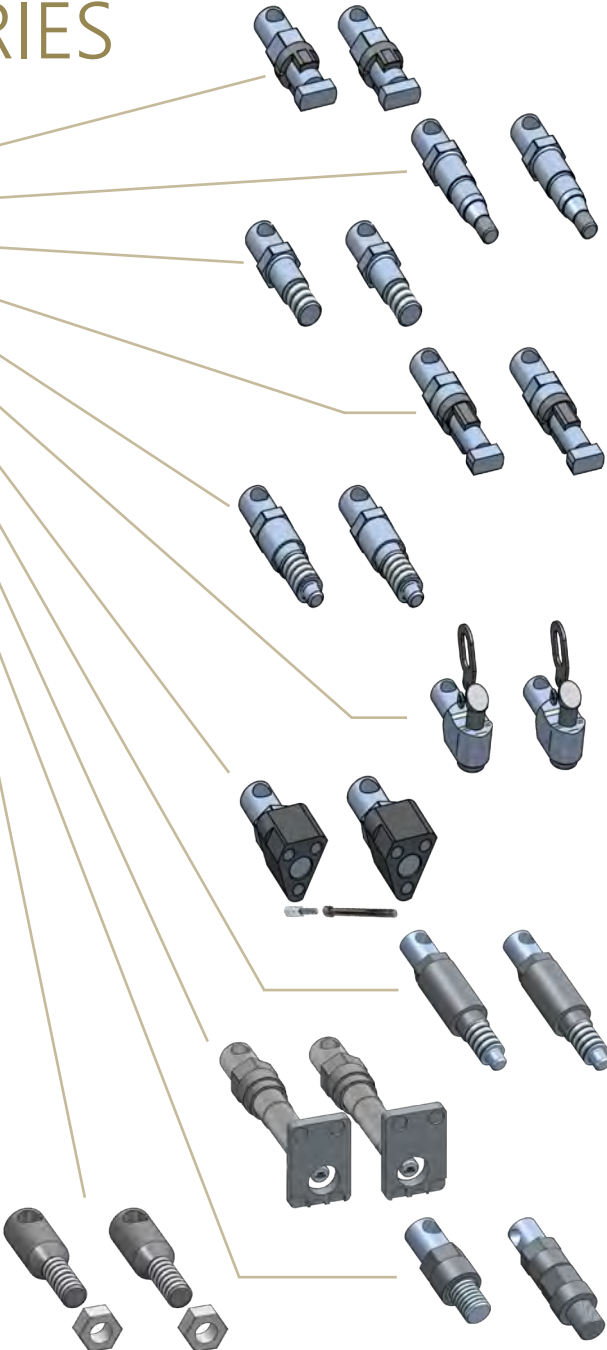
Therefore your Safe-Bar system will never go out of date!

You can choose the taps you need for your towing operations, from this list - Everything from a Streamlined fully equipped.

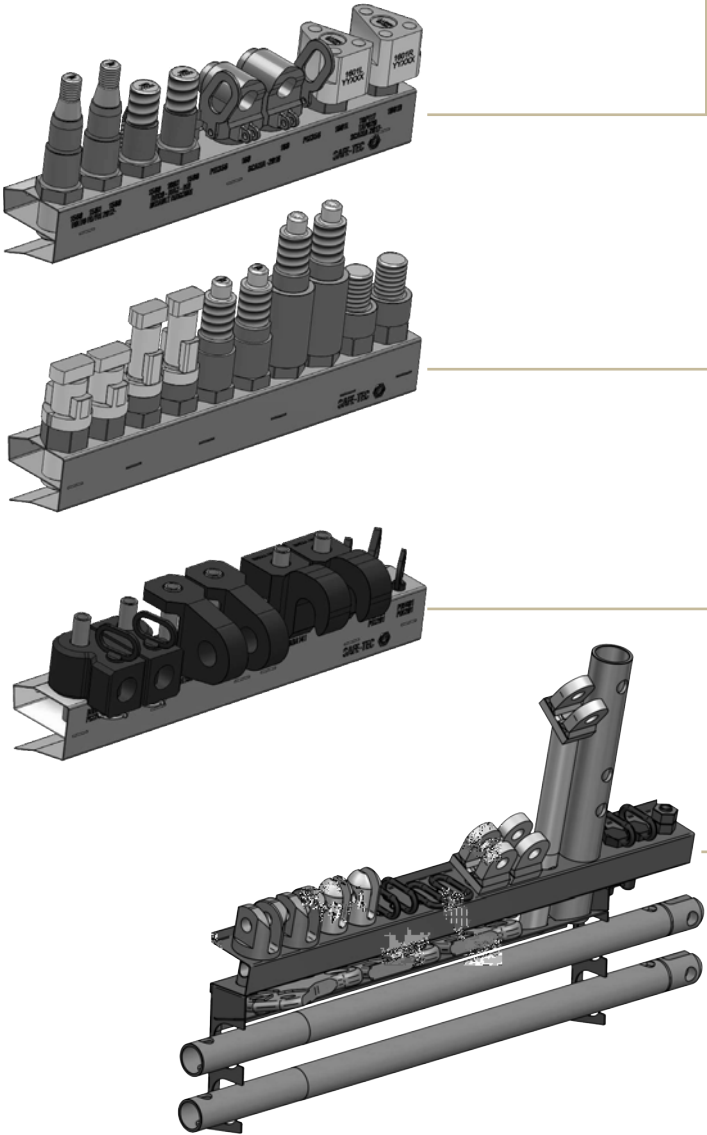
Thanks to the expert knowledge in materials and hardening procedures, the Safe-Bar taps have an invialded manufacutring quality. **The Counter nut construction ensures your towing operations and keeps everyone safer!**



Part No.	For Tap set	Qty
BRA108N	BRA1580	1
BRA156N	BRA1560K - BRA1561K	1
TAP020	BRA1601K	1
TAP045	BRA1680K	1
TAP050	BRA1680K	1



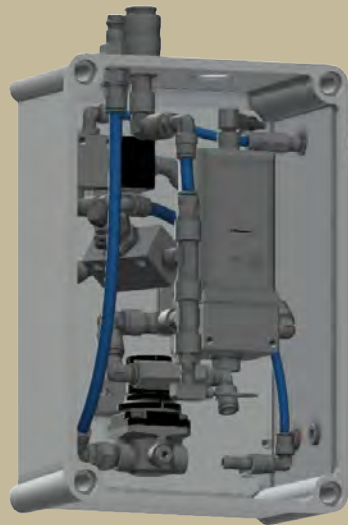
Part No.	Item description
BES081	Tool Box Mount for Aframe
BES091	Tool Box Mount for Safe-Bar
BES090B	Tool Box Mount for Taps Type 2
BES090A	Tool Box Mount for Taps Type 1



Part No	Item Description
CHA016	Safe-Bar Chainset 16mm G100 L: 2000mm WLL: 10T / Pull: 20T (28T als 90° sling)
WIR221	Recovery rope Ø22mm x 3000mm MBL: 36T / Zug (PL): 18T (25T als 90° sling)
KRO150	Frame hook WLL: 2,5T / Zug: 5T / MBL: 10T

SAFE-BRAKE SAF052

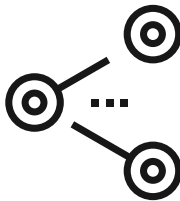
The Safe-Brake system is an assisting brake which require no changes to the existing braking system. The system is easily installed with an extra brake line coupling on the Recovery vehicles rear. Applicable with all towing methods. The system also functions with ABS, EBS and CAN bus control, hydraulic and air-based braking systems. The newest generation of the Safe-Brake offers a Plug n’ play system for even easier mounting and increased safety. The universal seat bracket is applicable for all commercial vehicles. The basic kit includes fittings for all types of brake pedals to change with ease. The bracket secures with 2 rachet straps around the seat and the length adjustable pneumatic cylinder installs in minutes.



Includes	Qty
Seat bracket with control box & Remote	1
Length adjustable pneumatic cylinder	1
Brake pedal adaptor kit	1
Air supply hose with quick couplings	1



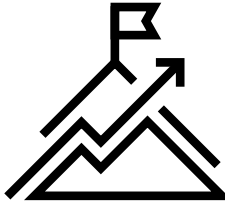
Easy installation



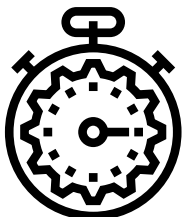
For all air brake systems
CANBUS & ABS



Electronic pressure Sensor



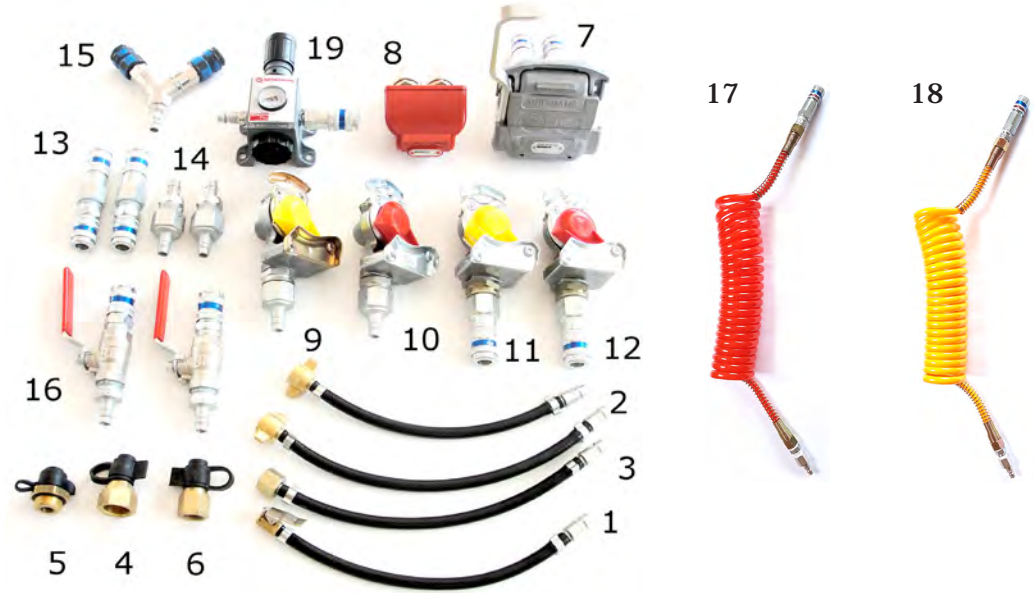
Digital 100% adjustable
Brake pressure from cabin



Sub 5 min Deployment



Intelligent emergency function
for optimal safety



Pos	Part no.	Item description	Qty
1	FIT341	Tire inflation nipple w. lock 0.3m 1/4" & nipple HE type	1
2	FIT350	Test Nipple M16x1.5 inner thread wing nut w. 0.3m 1/4" hose & Nipple HE type	2
3	FIT351	Test Nipple M16x1.5 inner thread w. 0.3m 1/4" hose & Nipple HE type	1
4	FIT360	Test fitting M22x1.5 outer/ M16x1.5 outer w. cap	1
5	FIT361	Test fitting M22x1.5 inner/ M16x1.5 outer w. cap	1
6	FIT362	Test fitting M16x1.5 outer/ M16x1.5 outer w. cap	1
7	KOB020	WABCO Duomatic connector w. valve & quick couplings	1
8	KOB021	WABCO Duomatic male part W/O valve w. nipples HE type	1
9	KOB031G	NATO coupling W/O valve w. nipple HE type yellow	1
10	KOB031R	NATO coupling W/O valve w. nipple HE type red	1
11	KOB032G	NATO coupling W/O valve w. quick coupling HE type yellow	1
12	KOB032R	NATO coupling W/O valve w. quick coupling HE type red	1
13	KOB040	Quick coupling 1/2" female/female HE type	2
14	KOB045	Connector nipple/nipple for quick couplings HE type	2
15	KOB050	Y-connector w. quick couplings/nipple HE type	1
16	KOB055	Ball valve connector 1/2" quick coupling /nipple HE type w.	2
17	SLA034RK	Brake hose, working range 4m quick coupling/nipple HE type red	1
18	SLA034YK	Brake hose, working range 4m quick coupling/nipple HE type yellow	1
19	VEN022	Pressure regulator excelon 1/4" quick coupling/nipple HE type	1

SAFE-BRAKESAF080

Suzie Hose kit for connecting the Casualty to the Tow-Truck during towing. The Suzie kit with hoses and fittings for all truck brands; Mercedes, Iveco, MAN, DAF, Volvo and Scania. The pressure regulator prevents over breacking the axle’s on the casualty. Spiral hoses, red and yellow for the Service & Brake line, with additional extension hoses for the deceleration of buses. Incl. Adapter hoses for the air supply from the Tow Truck during towing.

WHEELDUCK 3.0

Your Ultimate Vehicle Recovery Companion!

Designed to meet the rigorous demands of vehicle recovery operations, the Wheelduck 3.0 is a versatile and powerful tool crafted for professionals in the field. Compatible with both EU and US trucks equipped with 8 and 10 bolt wheels, this equipment offers a reliable solution for a variety of recovery scenarios.

Powerful Performance: With a maximum pull rating of 16 tons (metric), the Wheelduck 3.0 excels in handling heavy recovery tasks with ease. Its robust design ensures stability and control, even when faced with challenging terrain or adverse conditions.

Efficient Lifting Capacity: Equipped with the ability to lift up to 16 tons (metric) per axle, the Wheelduck 3.0 provides the necessary strength and precision required for safe and effective vehicle retrieval. Its lifting capabilities minimize downtime and expedite the recovery process, enhancing operational efficiency.

Durable Construction: Crafted with durability in mind, the Wheelduck 3.0 features a rugged build that withstands the rigors of frequent use in demanding environments. Its sturdy construction ensures longevity and reliability, making it a trusted companion for vehicle recovery professionals.

Versatile Application: Whether it's heavy-duty vehicle retrieval, roadside assistance, or recovery missions in remote locations, the Wheelduck 3.0 offers versatile functionality to meet diverse recovery needs. Its compatibility with a range of trucks and wheels enhances its utility across different scenarios.

Innovative Design: Engineered with practicality and efficiency in mind, the Wheelduck 3.0 boasts an intuitive design that simplifies the vehicle recovery process. Its user-friendly features enable operators to perform tasks with precision and confidence, even in high-pressure situations.

Elevate Your Vehicle Recovery Operations: Experience the unparalleled performance and reliability of the Wheelduck 3.0 and streamline your vehicle recovery operations. Whether you're a towing professional, roadside assistance provider, or recovery specialist, this equipment is designed to enhance your capabilities and ensure successful outcomes.

Invest in Quality: Choose the Wheelduck 3.0 for a dependable and efficient vehicle recovery solution. Backed by Safe-Tec's commitment to quality and innovation, this tool is engineered to deliver reliable performance when it matters most.



RECOVERY



Capacity	Per Wheel	Per Axle
Max pull (PL)	16t	-
Lift (WLL)	8t	16t

Part no.	Item Description
WHE022	Wheelduck for 1 Wheel 8/10 holes (Alu & Steel rims) (NUT00XB required)
NUT004C	Nut I M22x1,5mm for MB-Man-Daf-Setra-Bova-Iveco-Renault-Scania-Volvo 2003->
NUT005C	Nut II 7/8" UNF for VOLVO for Vehicles before 01-07-2003
NUT006C	Nut III 7/8" BSF for SCANIA for Vehicles before -1995



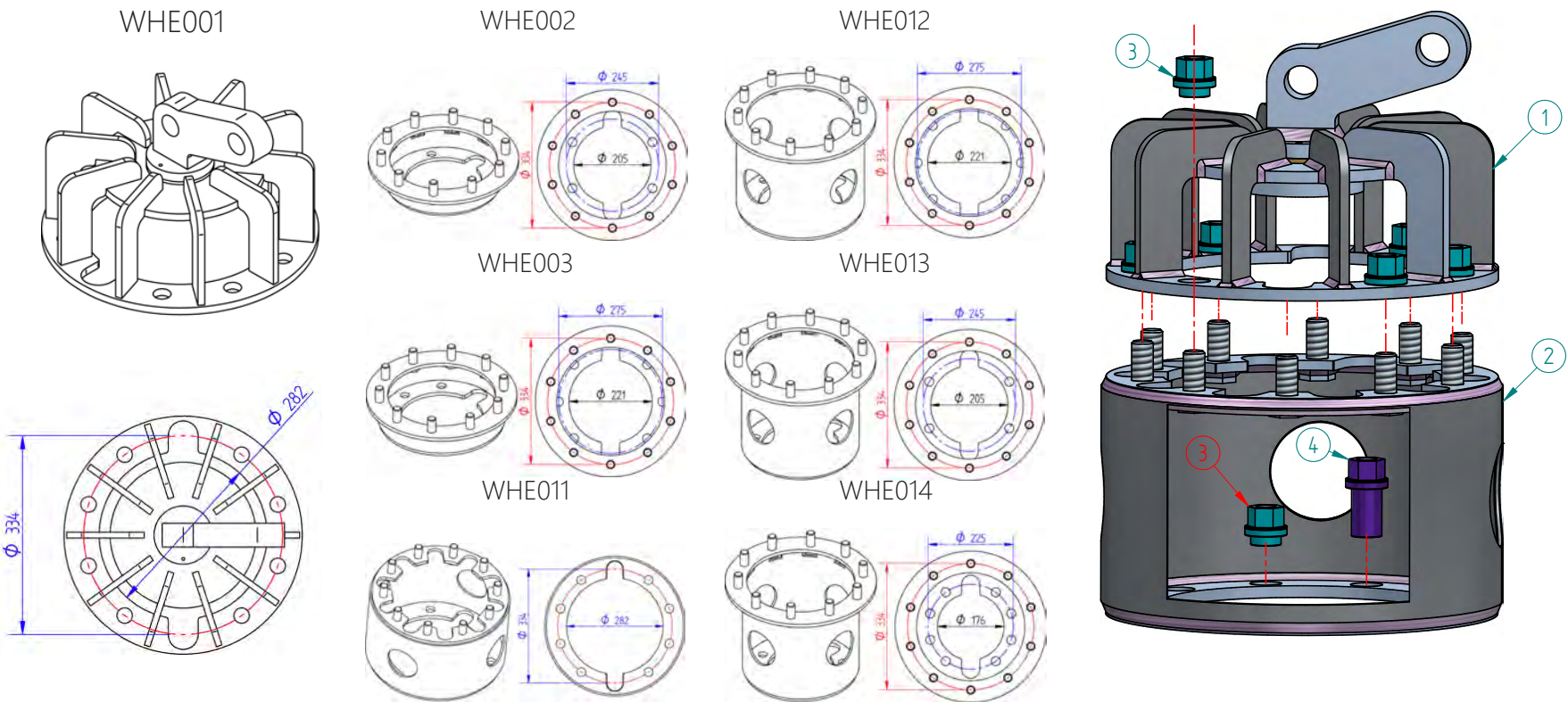
WHEELDUCK CROWN

On todays commercial vehicles, safety restrictions and composite material, makes it hard to find bearing attachment points. The Wheelduck solves this problem, by connecting directly on to the axle of the vehicle. A simple and strong solution. The wheelduck has been on the market for many years. Safe-Tec In-house testing facilities guarantees a solid construction and high strength. The original Crown construction are for the heavier material. For lifting and towing, this solution gives you a solid anchor point for everything from roadside help to logistics. The basic 10 studs Wheelduck WHE001 is designed for front wheels, with available 6, 8 or 10 studs adaptors for single or dual mounted axles.

Capacity	Per Wheel	Per Axle
Max pull (PL)	13t	26t
Lift (WLL)	6.5t	13t



Pos.	Part no.	Item Description	Weight	Qty.
1	WHE001	Wheelduck for Single Mounted Wheels 22.5" with 10 holes	24 kgs	1
2	WHE002	Adaptor for dual mounted wheels 17.5"/19.5" with 8 holes	12 kgs	1
	WHE003	Adaptor for dual mounted wheels 17.5"/19.5" with 6 holes	13 kgs	1
	WHE011	Adaptor for dual mounted wheels 22.5" with 10 holes	22 kgs	1
	WHE012	Adaptor for dual mounted wheels 17.5"/19.5" with 8 holes	22 kgs	1
	WHE013	Adaptor for dual mounted wheels 17.5" with 6 holes	22 kgs	1
	WHE014	Adaptor for dual mounted trailer wheels 17.5"/19.5"with 10 holes	22 kgs	1
3	NUT004B	Nut type I MAN, DAF, Setra, Bova, Iveco & Renault		8
	NUT005B	Nut type II Volvo		8
	NUT006B	Nut type III Scania		8
	NUT002B	Nut type 0 MB Atego		8
4	NUT004/5/6A	Use existing aluminum Rim nuts already on the casualty		



SAFE-TEC SNATCH BLOCKS

The Safe-Tec Snatch Blocks are designed to be simple, strong and durable. The versatility of the Snatch Blocks gives you all options in lifting, pulling and pully solutions. Regarding quality, the Safe-Tec Snatch Blocks are CE approved and follows EN std. 14492-1-2006.

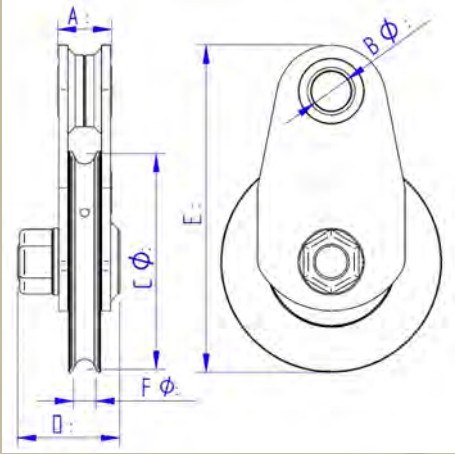
In-House testing, development and productions ensures you a strong and dependable component for everyday use. Following the Safe-Tec philosophy; strong components are not necessarily heavy. Through research and development, these Blocks have been designed to withstand the stress of everyday use, using as little material as possible.

A total weight between 9,3kgs-37,6 kgs. The Safe-Tec Snatch Blocks comes in 4 different sizes, to let you choose the solution that fits your needs. Choosing the correct size depends on the intended use, wire size and wether it will be used for lifting or pulling. Our Snatchblocks are paired with shackles from Delta.

For solutions including lifting, the Supershackle delivers trust in the high-grade steel and ease of use. This makes the Snatch block easier to mount and dismount.



Part no.	A	B	C	D	E	F
KAS116K	41	32.5	179	86	273	16
KAS119K	41	32.5	179	86	273	16
KAS120DB	48	36	205	95	320	18
KAS120K	48	36	205	95	320	18
KAS126K	48	36	205	95	320	18
KAS140K	58	43	234	111	111	24
KAS150K	58	43	234	111	111	24
KAS162	66	53	286	118	118	26
KAS162K	66	53	286	118	118	26



Part no.	NSN	Max Pull(PL)	Max Lift (WLL)	Rope Diam.	MBL t/kN	Weight Block	Shackle	Weight Shackle	Weight Total
KAS116K	3940226326008	16t		Ø16	32/318	7.1kgs	8.5t	2.25kgs	9.3kgs
KAS119K		20t	10t	Ø16	42/418	7.1kgs	12,5t*	2.78kgs	9.9kgs
KAS120DB	3940226275369	24t	12t	Ø18	68/677	10.5kgs	Excl.		10.5kgs
KAS120K	3940226199940	24t		Ø18	68/677	10.5kgs	12t	4.3kgs	14.8kgs
KAS126K		26t	13t	Ø18	68/677	10.5kgs	18t*	5.25kgs	15.7kgs
KAS140K		40t		Ø24	80/797	16.8kgs	17t	7.8kgs	24.6kgs
KAS150K		50t		Ø24	80/797	16.8kgs	25t	12.6kgs	29.4kgs
KAS162	3940226280728	60t		Ø26	120/1195	25.0kgs	Excl.		25.0kgs
KAS162K	3940226223168	60t		Ø26	120/1195	25.0kgs	25t	12.6kgs	37.6kgs

*Super shackle

SAFE-TEC DOLLIES

The Safe-Tec Dollies are designed to be simple, strong and durable. The versatility of the Dollies gives you all options on your flatbed. Regarding quality, the Safe-Tec Dollies are CE approved and follows EN std. 14492-1-2006. In-House testing, development and production ensures you a strong and dependable component for everyday use. Following the Safe-Tec philosophy; strong components are not necessarily heavy. Through research and development, these Dollies have been designed to withstand the stress of everyday use, using as little material as possible. A total weight between 7.4-9,3kgs. The Safe-Tec Dollies comes in 2 different sizes, to let you choose the solution that fits your needs. Choosing the correct size depends on the intended use, for narrow or wide wheels.



Part no.	Item Description	Capacity per dolly	Material	Wheelsize in mm	Dimensions in mm L - W - H	Weight in kgs
RUL003K	Dolly narrow	1500kgs	Aluminum	Ø125	625 x 275 x 135	7.4
RUL004K	Dolly wide	1500kgs	Aluminum	Ø125	625 x 363 x 135	9.0

SAFE-TEC TOW LIGHTS

Radio-controlled LED recovery lights, for marking of the casualty towed in the wheel grid, with the Safe-Bar or a tow bar. The lights are perfect for towing trailers as well – simple to mount and attach. The radio transmitter plugs into the tow truck's trailer socket on the tow truck. The lamps simply attach to the casualty's rear, and you are ready to go. The design of the lights makes it easy to attach the magnetic base of the lights to the included suction tool (e.g. for window mounting), securing it with tension straps if necessary. The radio transmitter receives power through the trailer light connector. Each light has three functions: tail, brake & indicator light. Both tail lights have an integrated radio receiver and rechargeable battery. The tail light is turned on by a switch on each tail light. As a result, they are not dependent on the radio signal. This ensures safety, so that there are always tail lights showing at the rear of the casualty/trailer.

The Wireless Tow Board LYG020 includes:	Qty
Brake light (LED)	2
Indicator light (LED)	2
Battery 12V/2AH NiMH	2
Power Cable 12-24V DC (can be attached if battery runs low)	1
Charger for 10-30V DC	1
Width contracted/extended 1.3m/2.9m	



LYG008 includes:	Qty
Radio transmitter with plug 1, 2 or 3	1
Set of LED lights with built in battery, radio receiver & magnet	1
Charger for 10-30V DC	1
Vacuum tools with plate for magnet	2

Max. operating time at +20°C:
With continuous tail light and 10% brake or indicator light: approx. 40 hours. With continuous tail light and 10% brake or indicator light and 2 amber LED flashing lights: approx. 10 hours.



